

## Quick Reference Installation Guide

### SP10 OUTSIDE SPEAKER

The SP10 speaker (Figure 1) is designed for use in Quick Service Restaurant (QSR) menu boards, speaker posts, and enclosures. The instructions below are for a typical installation of the SP10.

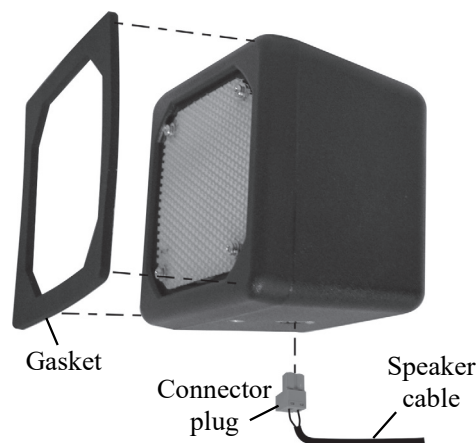
#### Tools/Equipment Required

- General hand tools: screwdrivers, cutters, pliers, wire strippers, etc.
- Soldering iron and solder
- Crimp caps or shrink tubing with heat gun
- Serrated knife
- Audio Cable (not included)
- Acoustic Foam (not included)

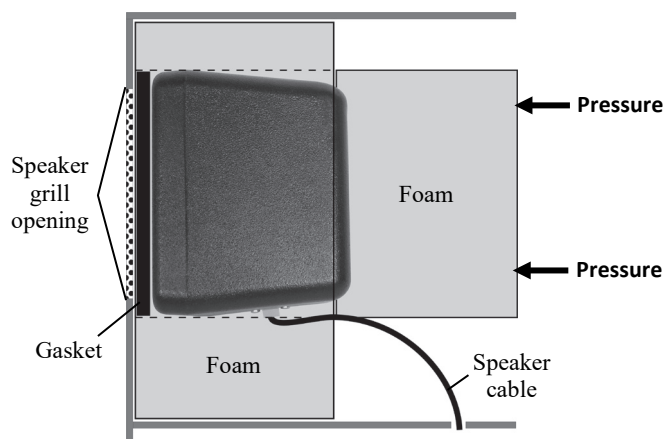
1. Strip approximately 1 inch (25.4 mm) of insulation from the end of the speaker cable and ¼ inch (6.35 mm) of insulation from each of the two cable wires, but do not tin the wires. Connect the speaker cable wires to the connector plug, as shown in Figure 2.
2. Insert the connector plug into the connector on the speaker, as shown in Figure 2.
3. Peel the paper off the self-adhesive gasket, and press the adhesive side of the gasket against the front of the speaker in the position shown in Figure 2.
4. Position the speaker inside the speaker post or menu board, with the gasket centered against the inside of the speaker grill as shown in Figure 3. The cable connector can be on the bottom or on either side. Align the opening in the gasket with the grill opening.
5. Remove both inserts from the molded foam enclosure and place the foam enclosure around the speaker. Trim foam with a serrated knife if necessary. Place removed foam inserts behind speaker to provide pressure to speaker, to ensure a good gasket seal against the speaker grill opening.



Figure 1



SP10 with gasket and cable connector plug  
Figure 2



SP10 in speaker post, menu board, or enclosure  
Figure 3

## For NEXEO | HDX™ Installation Only

When connecting the SP10 to a NEXEO™ system, the SP10 must be used in conjunction with the NEXEO IB7000 interface box (i.e., it does not connect directly to the base station as with other products).

- The two SP10 speaker wires connect to terminals 6 and 7 of the seven-pin DM5 MIC | SPKR connector on the IB7000 (this connector is labeled on the IB7000).
- The three-pin PLC/BASE connector on the IB7000 then connects to J4500 on the base station (this connector is also labeled on the IB7000).
- See Figure 4, the IB7000 installation guide or NEXEO system installation guide for more details.

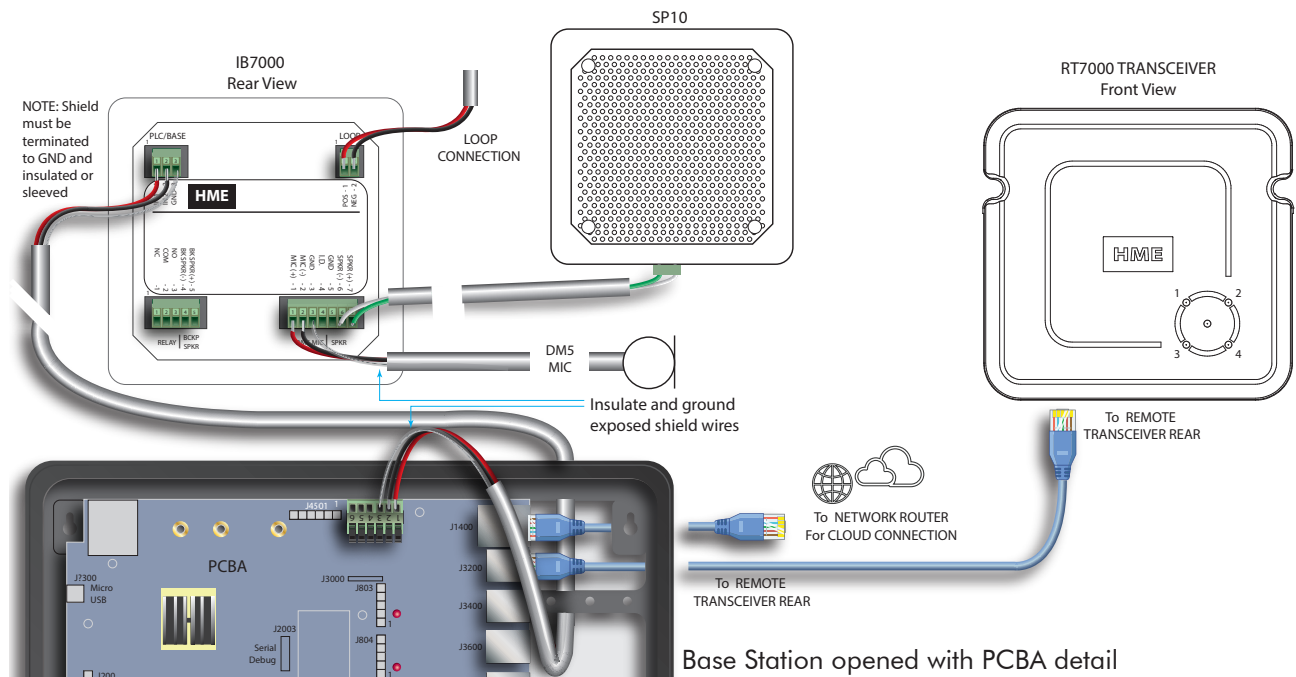


Figure 4

### Specifications:

**Dimensions:** 5.62" H x 5.62" W x 4.5" D (142.8 x 142.8 x 114.3 mm)

Add 0.25" D (6.4mm) with foam gasket

**Weight:** 2.55 lb (1.16 kg)

**Impedance:** 8  $\Omega$

**Power:** 15 W

**Temperature:** Operating range -22°F to +140°F ( -30°C to +60°C)



A copy of this guide and more can be found by scanning this QR code or going to:  
<https://www.hme.com/qsr/drive-thru-user-manuals/>

*The HME logo and product names are registered trademarks or trademarks of HM Electronics, Inc.*

## Compliance Section

**Caution:** All products are compliant with regulatory requirements detailed in this document when the user follows all installation instructions and operating conditions per HME specifications.

**Caution:** Use of accessories and peripherals other than those recommended by HME may void the product's compliance as well as the user's authority to operate the equipment.

**Caution:** Product modifications not expressly approved by the party responsible for compliance can void the user's authority to operate the equipment.

### European Union (CE mark)

The CE marking indicates compliance with the following directives and standards, whenever applicable to the product in question.

#### Directives:

- RoHS Directive 2011/65/EU and 2015/863/EU

#### Standards:

- EN50581

**Warning:** This is a Class A product. In a domestic environment this product may cause radio interference in which case the user may be required to take adequate measures.

### Waste Electrical and Electronic Equipment (WEEE)

The European Union (EU) WEEE Directive (2012/19/EU) places an obligation on producers (manufacturers, distributors and/or retailers) to take-back electronic products at the end of their useful life. The WEEE Directive covers most HME products being sold into the EU as of August 13, 2005. Manufacturers, distributors and retailers are obliged to finance the costs of recovery from municipal collection points, reuse, and recycling of specified percentages per the WEEE requirements.



### Instructions for Disposal of WEEE by Users in the European Union

The symbol shown below is on the product or on its packaging which indicates that this product was put on the market after August 13, 2005 and must not be disposed of with other waste. Instead, it is the user's responsibility to dispose of the user's waste equipment by handing it over to a designated collection point for the recycling of WEEE. The separate collection and recycling of waste equipment at the time of disposal will help to conserve natural resources and ensure that it is recycled in a manner that protects human health and the environment. For more information about where you can drop off your waste equipment for recycling, please contact your local authority, your household waste disposal service or the seller from whom you purchased the product.

### United Kingdom (UKCA Mark)

The UKCA (UK Conformity Assessed) marking is a new UK product marking that will be used for goods being placed on the market in Great Britain (England, Wales and Scotland). The UKCA marking alone cannot be used for goods placed on the Northern Ireland market, which require the CE marking or UK(NI) marking.

